

2026
ONLINE
EDITION

DESTINATION



DAINTREE & PORT DOUGLAS DIRECTORY

The industry's definitive guide to our region

WHAT TO SEE | WHAT TO DO | WHERE TO GO

- ▶ Designed for tour booking offices, hospitality staff, tour guides, accommodation operators in the region.

...a world away from your everyday



Select Your Experience

Birdwatching Tours

Bike & Segway

Boat Hire

Coach Tours

Cooking Classes

Farm Tours

Fishing Trips

Fitness

Golf

Great Barrier Reef

Helicopter Flights

Horse Riding

Hot Air Ballooning

Indigenous Experiences

Lawn Bowls

Mountain Bike Tours

Paragliding

Pickle Ball

Private Boat Charters

Rainforest Canopy Tours

River Cruises

River Drifting

Sailing

Swimming, Water Parks

Trike Tours

Watersports

Walking and Hiking Tours

Walks – Self Guided

Wildlife Experiences

4WD Off Road Adventure

Updates

Please send updates
and corrections to:

Daintree Marketing
Cooperative

C/- Gaye Scott on
0418 793 009 or
gaye@gayescott.com

↑ Birdwatching Tours

Name/Link	Contact / Location	Description	Times / Bookings
Cooper Creek Wilderness	4098 9126 Info@coopercreek.com.au Cape Tribulation Road at Coopers Crossing	Cooper Creek is a paradise for birdwatchers, providing opportunities to spot a diverse range of avian species from vibrant kingfishers to majestic herons. 2 hour guided rainforest walks through cathedral-like amphitheatre of towering fan palms. 4 hour, 7.2 kilometre guided rainforest walks over uneven jungle terrain, water crossings, with expert sharing insight into ancient landscape.	2 hour - 10am & 2pm 4 hour - 8:30am & 1pm Book Tour Here
Daintree Boatman Wildlife Cruises	0417 651 929 boatman@daintreerivertours.com.au	Two hour cruises on the Daintree River at sunrise or sunset. Highly sought-after birds, crocodiles and snakes are seen on most cruises.	6:30am and 4pm Book Here
Daintree River Wild Watch	0447 546 926 info@daintreeriverwildwatch.com.au	Daintree River cruises offer opportunity for some great bird-watching and photography. Species often found include the Great- Billed Heron, Black Bittern, Nankeen Night Heron, Papuan Frogmouth, Double-Eyed Fig Parrot, Wompoo Fruit-Dove, Shining Flycatcher, Large-billed Gerygone, Yellow bellied Sunbird & many more – too many to mention.	6:30am and 4pm





Bike & Segway Tours

Name/Link	Contact	Description	Times
Bike n Hike	Bump Track — Bike n Hike bikenhike@live.com.au 0477 774 443	5 hour biking & hiking tour; 30 km; Intermediate grade Ages 8+	
Mossman Highlights E-Bike Tour	Port Douglas Bike Hire 4099 5799 info@portdouglasbikehire.com	<ul style="list-style-type: none"> ▪ 4 ½ to 5 hour e-Bike Tour – Mossman Gorge; Winery & Chocolate Farm ▪ E-bike & helmet - GPS Guidance & maps ▪ Morning shuttle to Cooya Beach, your starting point ▪ Afternoon shuttle back from the Chocolate Farm ▪ Shuttle bus between Centre & Gorge walks ▪ Chocolate tasting plate at the Chocolate Farm 	Depart Port Douglas Bike Hire, 8 Warner Street, 9:30am Depart Chocolate Farm 4pm
Port Douglas Segway Tours	0456 383 287 portdouglas.segway@outlook.com	1 ½ to 2 hour tour - Segway along Four Mile Beach & local trails Age 12+ Max. 7 guests	Two tours per day



Boat Hire

Name	Location	Description	Times
Port Douglas Boat Hire	4099 6277 44 Wharf Street, Crystalbook Marina After Hours 0439 067 812	<ul style="list-style-type: none"> ▪ Stable pontoon boats ideal for sightseeing and fishing. ▪ Explore 15kms of Port Douglas Inlet at your leisure. ▪ No experience is required - boats take up to six people. ▪ Boat licence is NOT required. ▪ A simple to follow map is provided as well as instructions on where you may fish. 	Crystalbook Marina, Berth C1



Coach Tours – Daintree & Atherton Tablelands

Company & Tour	Contact	Description	Time
Private Daintree Wanderer Tour	Australian Luxury Escapes 1300 792 213 tours@australianluxuryescapes.com	<ul style="list-style-type: none"> ▪ Full Day Daintree Tour ▪ Daintree River Cruise ▪ Morning tea under rainforest canopy ▪ Lunch ▪ Cape Tribulation Beach ▪ Alexandra Range Lookout ▪ Daintree Icecream 	7:25am Thala Beach 7:30am Port Douglas Return 5:45pm
Mossman Gorge Adventure	Back Country Bliss 4099 3677 sales@backcountrybliss.com.au	<ul style="list-style-type: none"> ▪ Full day Mossman Gorge Adventure Day ▪ River drift experience ▪ Kuku Yalanji Smoking ceremony at Mossman Gorge ▪ Guided rainforest walk ▪ Age 5+ 	8:30am to 4:30pm
Billy Tea Safaris	Billy Tea Safaris 4032 0077 info@billytea.com.au	<ul style="list-style-type: none"> ▪ Full day Daintree Rainforest and Cape Tribulation tour including Daintree River cruise, Emmagen Creek, Cape Tribulation Beach 	Pick up 8.20am Return 4.00 – 4.30pm
Wildlife and Rainforest Tour	Blue Adventures 0427 983 907 info@blueadventures.com.au	<ul style="list-style-type: none"> ▪ Full Day Tour - Wild Australian animals including kangaroos, emus, wallabies, platypus, tree kangaroos, lizards and prolific birdlife ▪ Guided walk through rare World Heritage 'Mabi' rainforest ▪ Restaurant lunch and boat cruise on volcanic crater lake ▪ Viewing the spectacular 1000 year old Bull kauri pines ▪ Visit to a working farm with plenty of resident wildlife ▪ Max. 6 guests 	7:30 am to 5:30 pm.
Cape Trib Connections	Cape Trib Connections info@capetribconnections.com Free call: 1800 838 757 Call anytime between 6am and 10pm	<ul style="list-style-type: none"> ▪ Full Day Daintree Tour ▪ Morning or afternoon refreshments ▪ Lunch may be pre-booked or BYO. ▪ Wildlife cruise on Daintree River ▪ Alexandra Lookout ▪ Guided rainforest walk ▪ Cape Trib Beach (Kulki day-use area) ▪ Mossman Gorge 	8:00am to 5:00pm



Coach Tours – Daintree & Atherton Tablelands

Company & Tour	Contact	Description	Time
Cassowary Falls Daintree Waters Tour	Cassowary Falls 0481 988 307 info@cassowaryfalls.com.au	<ul style="list-style-type: none"> ▪ Full Day Daintree Tour. ▪ 2 ½ hour Cassowary Falls Tour including: All action ATV rides on private property, swimming at Cassowary Falls, Army Truck ride, Seasonal Bush Tucker and Farm Fruit tasting. ▪ 1 Hour Daintree River Cruise. ▪ Light lunch. ▪ Friendly Guide. ▪ Return Transfers from Port Douglas 	8.15am Port Douglas Returns 3.30pm – 4pm. Book Here
Daintree Discovery Tours	Daintree Discovery Tours info@daintreediscoverytours.com.au 40982878	<ul style="list-style-type: none"> ▪ Full Day Daintree tour ▪ Mossman Gorge & Cape Tribulation ▪ Daintree River Cruise ▪ Interpretive rainforest walks ▪ Lunch at On The Turps restaurant at Heritage Lodge ▪ Swim in Cooper Creek ▪ Daintree ice-cream ▪ Alexandra Lookout 	7:25am to 5:30pm
Daintree Discovery Tours	Daintree Discovery Tours info@daintreediscoverytours.com.au 40982878	<ul style="list-style-type: none"> ▪ Half Day tour ▪ Daintree River Cruise ▪ Mossman Gorge, rainforest walk ▪ Swim in rainforest stream 	7:25am to 12:30pm Or 12:50pm to 5:30pm
Daintree Safaris	Daintree Safaris 4094 1351 info@daintreesafaris.au	Nicholas, one of the region’s most experienced guides will pick you up in our 4WD from your accommodation in Port Douglas or Mossman. Max. 6 guests per tour. Tour includes Daintree River cruise, secret swimming spots, Alexandra Lookout, Cape Tribulation Beach, guided walk, lunch at Heritage Lodge.	7:15am – 4:30/5pm



Coach Tours – Daintree & Atherton Tablelands

Company & Tour	Contact	Description	Time
Unique Daintree Food Tour - Explore Hidden Treasures	Daintree Sensations 4098 7117 info@daintreesensations.com.au	This carefully curated itinerary includes iconic farms and award-winning producers, where you'll enjoy some of the finest and freshest produce of the Daintree and visit some simply spectacular destinations. Highlights include chocolate tasting, sampling exotic tropical fruits, a gourmet platter of Daintree Saltwater Barramundi for lunch, a chance to lure and land your own barra. Swim at Cassowary Falls, and end with our very own Tastes of the Daintree artisan grazing board, served picnic style at the waterfall.	Wednesday To Saturday 9am to 5pm Bookings Essential
Daintree Rainforest Tours	Daintree Tours 4231 8012 info@calypsoreefcruises.com	Full day tour in luxury Mercedes with just 11 guests; crocodile cruise on Cooper Creek, Mossman Gorge and lunch at Heritage Lodge.	
Discovery Tours Australia Premium Rainforest Tour	Discovery Tours Australia 1300 32 10 19 info@discoverytours.com.au	<ul style="list-style-type: none"> ▪ Premium full-day (10 hours), small-group tour ▪ Daily departures & pickup from Port Douglas accommodation ▪ Visit Mossman Gorge, Daintree Rainforest, Cape Tribulation, Alexandra Lookout and Daintree River ▪ Includes scenic coastal drive, guided botanical rainforest walks, cable ferry crossing, Daintree River croc & wildlife cruise, refreshments, and quality restaurant lunch with exotic fruit tasting. ▪ Group size: 2-16 guests ▪ Age: 4 years + 	From 8:45am
Downunder Tours	Downunder Tours 4047 9066 res@downundertours.com	<ul style="list-style-type: none"> ▪ Full Day Tour Cape Tribulation, Daintree & Mossman. Includes Mossman Gorge, Daintree River Cruise, tropical BBQ lunch, Cape Tribulation Beach, exotic fruit ice cream and Alexandra Lookout. ▪ Purpose built luxury vehicles / Experienced guides / Eco Accredited / ▪ GPS activated commentary available in 6 foreign languages. 	
Daintree Exclusive Tour - FNQ Nature Tours	FNQ Nature Tours 0400 732 883 info@fnqnaturetours.com.au	<ul style="list-style-type: none"> ▪ Daintree river wildlife cruise ▪ Mossman Gorge Rainforest Track and swimming option ▪ Tropical themed 2 course lunch ▪ Mossman Gorge ▪ Scenic stop for ocean views ▪ Max. 11 guests 	8:30am to 4:30pm



Coach Tours – Daintree & Atherton Tablelands

Company & Tour	Contact	Description	Time
Daintree Afternoon & Nocturnal Tour	FNQ Nature Tours 0400 732 883 info@fnqnaturetours.com.au	<ul style="list-style-type: none"> Tour of the Daintree Rainforest at night – 9 hours Cruise the Daintree River spotting wildlife on a quiet, clean solar electric boat. Dine in the rainforest before venturing out on foot to discover the nocturnal world. Age 14+ Max. 11 guests 	1:30pm to 10:30pm Book Here
Kuranda Day Tours From Port Douglas	Kuranda & Outback Tours 0418 909 818 info@kurandatours.com.au	<ul style="list-style-type: none"> Guests collected from accommodation transferred to Freshwater Train Station Kuranda Scenic Railway 2 hours free time to explore Kuranda Village Optional attractions: Australian Butterfly Sanctuary; Birdworld and/or Kuranda Koala Gardens Return via Skyrail Rainforest Cableway Palm Cove – walk on the beach before returning to Port Douglas 	8am – 4:30pm
		<ul style="list-style-type: none"> Late Start Tour Skyrail Rainforest Cableway to Kuranda 2 hours free time to explore Kuranda Village Optional attractions: Australian Butterfly Sanctuary; Birdworld and/or Kuranda Koala Gardens Return via Kuranda Scenic Railway Palm Cove – walk on the beach before returning to Port Douglas 	11am to dusk
Outback Tasting Adventures	Outback Tasting Adventures 4098 5059 0418 909 818 info@kurandatours.com.au	Designed for foodies who want to savor flavours and understand the stories behind the products. Tour includes: Rainforest Nature Park for Breakfast; Emerald Creek Ice Creamery; Humpy Nut World; Australian Platypus Park at Tarzali Lakes for an outdoor feast crocodile sausage rolls, kangaroo skewers & smoked chicken; Gallo Dairyland – working Dairy farm where chocolates and cheeses are made on-site; Mt Uncle Distillery - tastings of award-winning spirits and liqueurs and Platypus Hut at Julatten Max. 20 guests	8am to 6pm



Coach Tours – Daintree & Atherton Tablelands

Company & Tour	Contact	Description	Time
Port Douglas Luxe Tours	Info@portdouglasluxetours.com 0404 651 534 Limousine tours with maximum of 6 guests.	<p>Daintree Dream – Full Day Tour Step into the ancient beauty of the Daintree Rainforest with a personalised guided experience. Wander beneath towering canopies, explore tranquil streams, and enjoy a meaningful cultural connection with the land.</p> <p>Cape Tribulation Adventure – Full Day Tour Journey along the spectacular Great Barrier Reef Drive, cross the Daintree River, and discover wild beaches, rainforest lookouts, and the dramatic landscapes where the jungle meets the sea.</p> <p>Half Day Rainforest and Crocodile Cruise – 6 hours Discover the essence of the Daintree in just half a day on this privately guided rainforest at the Mossman Gorge and wildlife experience on a Private Crocodile and wildlife Cruise at the Daintree River.</p>	\$2,735 for 2 guests \$560 per additional guest. \$2,890 for 2 guests \$340 per additional guest. \$1590 for 2 guests \$180 per additional guest
Tony's Tropical Tours	Tony's Tropical Tours 0429 993 230 info@tropicaltours.com.au	Full day tour taking in Mossman Gorge, Daintree River cruise and Alexandra Lookout to enjoy sweeping views extending from the Daintree River Estuary to the Coral Sea. Then explore the rainforest at Noah Valley, a World Heritage Listed private property which supports some of the most spectacular, pristine rainforest found anywhere in the world and enjoy a refreshing swim in the crystal-clear rainforest stream. Max. 11 guests. Age 7+	Two departure times: 7:15am – 4:30pm or 8:15am to 5:30pm
Cape Tribulation, Daintree & Mossman	Tropic Wings Tours & Charters 4041 9400 daytours@tropicwings.com.au	Full day adventure to the Daintree Rainforest and Cape Tribulation. Includes morning tea at Wildlife Habitat an immersive wildlife experience. Lunch at Mason's Café and a dip in the freshwater swimming hole. Walk in the world's oldest rainforest and on Cape Tribulation Beach and stop at Alexandra Lookout and enjoy a Daintree River cruise on the way home.	



Cooking Classes

Name	Contact	Description	Location
Thai Cooking Class at Jungle Fowl	Enquiries via email contact form: info@oakskitchenandgarden.com	<ul style="list-style-type: none"> Learn how to make a selection of Thai dishes, classic & modern, salads, relishes & curries. Suitable for experienced or novice cooks Minimum 6 guests to secure a class 	2/28 Wharf Street, Port Douglas



Farm Tours

Name	Contact	Description	Time / Days
Australian Chocolate Farm	4098 1808 hello@theaustralianchocolatefarm.com.au	<ul style="list-style-type: none"> Guided tour through chocolate plantation. See how cocoa is grown how it turns into chocolate Taste some delicious award-winning chocolates. 15 minutes from Port Douglas 	9am to 4pm Wed to Sat Tours 9:30am & 1pm Book Here
Cape Trib Farm Fruit Tasting and Farm tour	4098 0042 info@capetribfarm.com.au	<ul style="list-style-type: none"> Taste a selection of seasonal tropical and exotic fruits Learn about their origin, uses, legends & myths. Guided tour through orchard. 	2pm and finish around 3.30pm. Book Here
Daintree Sensations	4098 7117 info@daintreesensations.com.au	<ul style="list-style-type: none"> Full day tour Itinerary includes iconic farms and award-winning food producers Chocolate; exotic tropical fruits, gourmet platter Daintree saltwater barramundi. Swim at Cassowary Falls 	Wednesday To Saturday 9am to 5pm Bookings Essential

Farm Tours



Name	Contact	Description	Time / Days
Daintree Saltwater Barramundi Farm	Cnr Mossman Daintree Rd & Vixies Rd, Wonga Beach 4098 7117 info@hookabarra.com.au	<ul style="list-style-type: none"> ▪ 1 hour tour ▪ Feed juvenile barramundi ▪ Watch farm hand harvest fish to order ▪ Gourmet platter of fresh barra produce 	Three tours daily 9am; 10:30am & 12pm
Mossman Highlights E-Bike Tour	Port Douglas Bike Hire 4099 5799 info@portdouglasbikerehire.com	<ul style="list-style-type: none"> ▪ 4 ½ to 5 hour self guided e-Bike Tour – Mossman Markets (Sat); Mossman Gorge; Shannonvale Tropical Fruit Winery & Australian Chocolate Farm ▪ E-bike & helmet and GPS Guidance & maps ▪ Morning shuttle to Cooya Beach, your starting point ▪ Afternoon shuttle back from the Chocolate Farm ▪ Shuttle bus between Centre & Gorge walks ▪ Chocolate tasting plate at the Chocolate Farm 	Depart Port Douglas Bike Hire at 9:30pm Return shuttle departs Chocolate Farm at 4pm
Shannonvale Tropical Fruit Winery	4098 4000 417 Shannonvale Road, Shannonvale	<ul style="list-style-type: none"> ▪ Boutique family-run winery producing tropical fruit wines from organic fruits grown and harvested on the property. ▪ Visitors welcome to sample up to five wines, free of charge. ▪ 20 minutes north of Port Douglas 	Cellar Door 10:00am to 4:30pm Tue – Sat





Fishing Trips

Company / Tour Name	Contact	Description	Depart	Return	Location
Akula Reef Fishing Port Douglas	Akula Sportfishing 0428 711 935 info@akulasportfishing.com.au	<ul style="list-style-type: none"> 4 hour Inshore Reef Fishing – Private Charter 	7:30am	11:30am	1 Spinnaker Close Berth B19
		<ul style="list-style-type: none"> 6 hour Outer Reef – Private Charter 6 hour Outer Reef Shared 	7:30am	1:30pm	
		<ul style="list-style-type: none"> Full Day 8 hour Outer Reef – Private Charter 	7:30am	3:30pm	
		<ul style="list-style-type: none"> Age 12+ Max. 8 guests 			
Aquis Reef Charters	Aquis Reef Charters 0447 749 991 hello@aquisreefcharters.com.au	<ul style="list-style-type: none"> Full Day – 7 ½ hours <i>MV White Cloud</i> Reef Fishing Max. 7 guests Ages 12+ 	8am	3:30pm	1 Spinnaker Close
		<ul style="list-style-type: none"> Full Day – 7 ½ hours <i>MV White Cloud</i> Reef Fishing & Snorkelling – Low Isles Lagoon or Undine Cay Max. 8 guests All ages 			
		<ul style="list-style-type: none"> Half Day travelling on <i>MV White Cloud</i> Coastal Fishing Max. 6 guests Ages 12+ 	8am 1pm	12:00pm 5pm	1 Spinnaker Close
Dragon Lady Reef Fishing Tour	Dragon Lady Reef Fishing Charters 0429372466 info@dragonlady.com.au	<ul style="list-style-type: none"> Full day Outer Barrier Reef – <i>MV Island Selina</i> Light lunch & drinks 	8:30am	4:30pm	Crystalbrook Superyacht Marina C20



Fishing Trips

Company / Tour Name	Contact	Description	Depart	Return	Location
Hook'd On The Daintree	0427 665 161 hookdonthedaintree@outlook.com Daintree Ferry Boat Ramp	<ul style="list-style-type: none"> ▪ 4, 6 and 8 hour fishing charter trips available ▪ River, estuary & coastal fishing ▪ BYO lunch and Drinks 	8am 8am 8am	12pm 3pm 5pm	Daintree Ferry Boat Ramp
Daintree Fishing	0488 907 776 dave@daintreefishing.com.au	<ul style="list-style-type: none"> ▪ Half Day - Personalised tours, river, coastal and reef sportfishing. 	7am	11am	Daintree Ferry Boat Ramp
Exceed Fishing Popper Fishing	Exceed Sportfishing Port Douglas 0497 561 867 info@exceedsportfishing.com.au Custom 8m Haines with 400 HP	<ul style="list-style-type: none"> ▪ Full day Outer Reef Sportfishing ▪ Popper Fishing ▪ Bottom Fishing or ▪ Half day 4 hours - Coastal reefs and estuary ▪ Great for families, beginners ▪ Quality fishing gear ▪ Water & soft drinks included - BYO lunch & alcohol ▪ Create a trip to suit needs ▪ 1 to 5 guests 	7am	3pm	Port Douglas Boat Ramp
Fish Hunter FNQ	Fish Hunter FNQ info@fishhunterfnq.com.au Craig: 0418 882 151 or Will: 0407 672 641	<ul style="list-style-type: none"> ▪ Full Day Daintree River ▪ River, estuary & coastal fishing ▪ Lunch & soft beverages provided ▪ Max. 3 guests 	Pick-Up: 6.30am Drop-Off: 5.30pm		Pontoon Daintree Ferry Boat Ramp
Levante	Fishing Port Douglas 0409 610 869 info@fishingportdouglas.com.au	<ul style="list-style-type: none"> ▪ Full Day or extended ▪ Reef, Game & Giant Trevally & Popper Fishing ▪ Lunch & soft beverages provided, BYO alcohol ▪ Max. 6 guests day trips ▪ Max. 4 guests overnight trips 	8am	4:30pm	Crystalbrook Marina Berth C5



Fishing Trips

Company / Tour Name	Contact	Description	Depart	Return	Location
Minke Light Tackle Game Fishing	Minke & Levante Charters 0409 610 869 Info@zulucharters.com.au	<ul style="list-style-type: none"> ▪ Full day ▪ Reef, Game plus Giant Trevally & Popper fishing 	8:30am	4:30pm	Crystalbrook Marina Berth C6.
Norseman Sportfishing - Odin	Fishing Port Douglas 0409 610 869 info@fishingportdouglas.com.au	<ul style="list-style-type: none"> ▪ Full day or Half Day travelling on <i>Odin</i> ▪ BYO lunch & alcohol ▪ Private charter only ▪ Max. 5 guests 	8am 8am 12:30pm	4pm 12pm 4:30pm	Port Douglas Public Boat Ramp
Shaka Game Fishing Charter	0402 054 858 info@skakaluxurycharters.com	<ul style="list-style-type: none"> ▪ Full day fishing ▪ Game fishing ▪ Snorkelling ▪ Private charter only ▪ Max. 8 guests 	8:30am	4:30pm	Crystalbrook Marina
Sublime Sportfishing	Sublime Sportfishing 0487 354 654 info@sublimesportfishing.com.au	<ul style="list-style-type: none"> ▪ Full day or extended ▪ Game & Giant Trevally & Popper Fishing ▪ Snorkelling ▪ Lunch & soft beverages provided - BYO alcohol ▪ Max. 8 guests day trips [Max. 4 overnight trips] 	8am	4:30pm	Crystalbrook Marina
Topwater Sportfishing - 25ft Contender	Fishing Port Douglas 0409 610 869 info@fishingportdouglas.com.au	<ul style="list-style-type: none"> ▪ Full day Outer Barrier Reef ▪ BYO lunch & alcohol ▪ Max 4 guests [3 only for topwater lure fishing] 	7:30am	3:30pm	Crystalbrook Marina



Fishing Trips

Company / Tour Name	Contact	Description	Depart	Return	Location
Hookabarra Barramundi Fishing Tour	Hookabarra 4098 7117 info@hookabarra.com.au	<ul style="list-style-type: none"> Land based fishing - 4 hour tour Transfers to/from Port Douglas in the Barramobile Farm tour One hour fishing Fish Feeding Lunch at the Hookabarra Kitchen 	9:45am 11:15am	1:45pm 3:15pm	Vixies Road, Wonga Beach
Hook Up Fishing Charters	Hook Up Fishing Charters 0402 751 929 info@hookupcharters.com.au	<ul style="list-style-type: none"> Get to the reef in 30 minutes Share charters are predominately bait fishing, for topwater and trolling jump on a private charter. 4, 6 & 8 hours trips 	7am 11:30am 7am	11am 3:30pm 3pm	Ashford Avenue
Out n About Private Half Day or Shared Half Day Charter	Out n About Sportfishing 0409 204 985 info@outnaboutfishing.com.au	<ul style="list-style-type: none"> Half Day 4 hour – estuary and inshore sportfishing <i>Reel Therapy</i> or <i>Atlas</i> Complimentary refreshments 5 guests 	8am 12:30pm	12pm 4:30pm	Public Jetty, Ashord Ave, Port Douglas
Private 6-Hour Charter		<ul style="list-style-type: none"> 6 hour – estuary, inshore reefs and Low Isles travelling on <i>Reel Therapy</i> or <i>Atlas</i> Complimentary refreshments 5 guests 	8am	2pm	Ashford Avenue Port Douglas
Full Day Fishing Charter Out n About		<ul style="list-style-type: none"> Full day aboard <i>Reel Therapy</i> and <i>Atlas</i> Inshore reefs, estuaries, and Outer Barrier Reef Complimentary refreshments Max. 10 guests [5 per boat) 	8am	4pm	Ashford Avenue Port Douglas
MV Norseman Reef Fishing Full Day	0419 015 262 info@mvnorseman.com.au	<ul style="list-style-type: none"> Full Day -8 ½ hour Reef Fishing tour on <i>Norseman</i> Picnic boxed lunch Licensed bar (no BYO) Max. 6 guests 	8am	4:30pm	Marano's Fuel Wharf, 35-39 Port Street, Port Douglas



Fishing Trips

Company / Tour Name	Contact	Description	Depart	Return	Location
Norseman Sportfishing Half Day	0419 015 262 info@mvnorseman.com.au	<ul style="list-style-type: none"> ▪ Half day fishing tour ▪ Coastal Barrier Reef and local inlets and rivers ▪ Min. 1 person, max. 6 guests 	8am	12pm	Marano's Fuel Wharf, 35-39 Port Street, Port Douglas
River & Estuary Fishing	Tropical Sportfisher 0409 613 583 info@tropicalsportfisher.com	<ul style="list-style-type: none"> ▪ Rivers & Estuary – Half Day and Full Day options ▪ Fly Fishing – Half and Full Day options ▪ Inshore Bluewater Fishing – Full Day ▪ River, Inshore, Nearshore & Flats fishing ▪ Max. 3 guests 	6:30am 6:30am	12pm 4/4:30pm	Ashford Avenue
Zulu Minke Levante Luxury Charters	Zulu Charters 0473 006 215 info@zulucharters.com.au	<ul style="list-style-type: none"> ▪ Light tackle and heavy tackle game fishing ▪ Scuba diving and snorkelling available ▪ Max. 8 guests – 4 for multi-day liveaboard trips 	Full day or multi-day trips.		Crystalbrook Marina





Fitness

Name	Contact	Description	Times
Aqua Sculpt Floating Fitness	Sheraton Grand Mirage Resort 4099 5888 168-190 Port Douglas Road sheraton.portdouglas@sheraton.com	<ul style="list-style-type: none"> A floating fitness session in Sheraton Grand Mirage Resort's stunning lagoon pools. Guided by Aqua Sculpt trainers, enjoy a full body workout combining elements of yoga and pilates. 	Saturdays 7am to 8am Main Lagoon Pool Bookings essential
Port Douglas Gym	0478 170 043 info@portdouglasgym247.com Port Village Shopping Centre Warner Street Carpark Entrance	<ul style="list-style-type: none"> A 24 hour fitness facility open to locals and visitors. Casual, 7-visit pass; weekly, monthly, 2,3 6 monthly passes. On site personal training services available. Fully air-conditioned To start membership, visit during staffed hours. 	Staffed Hours 8am to 4pm Monday to Saturday 24 hour access once
LiftHER	1/11 Warner Street, Port Douglas 0491 677 271	<ul style="list-style-type: none"> Women's Only Gym & Spin Studio 	Classes from 6am through to last classes starting at 6pm.
K-Form Pilates	40 Macrossan Street 0418 203 442 miss_devla@hotmail.com	<ul style="list-style-type: none"> Pilates classes Single class; 4, 10, 20 or 40 pack passes 	Classes from 8am M-F Classes from 9am Sat Closed Sundays Bookings essential
Yoga in the Tropics	0438 117 486 info@yogainthetropics.com Coconut Grove, 56-64 Macrossan St	<ul style="list-style-type: none"> Morning and evening studio and beach classes Silent retreats Ice bathing 	



Golf

Name	Contact	Description	Times
Mirage Country Club	4099 5537 49-69 Port Douglas Road, info@miragecountryclub.com.au	<ul style="list-style-type: none"> 18-hole championship course Driving range Pro Shop; gym and lap pool 	Public Tee Off 7:20am Last 3:44pm Pro Shop hours 7:00am to 6:00pm daily
Palmer Sea Reef Golf Course	Clubhouse Drive, off Old Port Rd 4087 2222 seareef@palmergolf.com.au	<ul style="list-style-type: none"> 18-hole Tropical links-style course 	First Tee Of 6:30–6:45am Last Tee Off 4:00pm
Mossman Golf Course	4098 2089 info@mossmangolfclub.com.au	<ul style="list-style-type: none"> 18-hole golf course Newell Beach Road, Newell Beach 25 minutes drive from Macrossan Street 	Tee Off Times First from 7am Last 4pm



GBR Great Barrier Reef Adventures

Website	Company & Contact	Description	Depart	Return
ABC Reef Safaris - Full Day - Diving & Snorkelling	ABC Reef Safaris 0419 713 372 sales@abcreefsafaris.com.au	<ul style="list-style-type: none"> Full day Outer Barrier Reef travelling on <i>Independence</i> Diving and snorkelling. Max. 12 guests. 	8am	3pm
ABC Reef Safaris - Full Day - Snorkelling	ABC Reef Safaris 0419 713 372 sales@abcreefsafaris.com.au	<ul style="list-style-type: none"> Full day Outer Barrier Reef travelling on <i>Voyager</i> Snorkelling Max. 24 guests 	8am	3pm
Blue Dive Port Douglas	Blue Dive Port Douglas 0427 983 907 info@bluedive.com.au	<ul style="list-style-type: none"> Full day Outer Barrier Reef travelling on either <i>Silversonic</i> or <i>Calypto</i>. Guided dive and snorkel trips. 70 – 75 guests on each vessel. 	8:30am	4:30pm



GBR Great Barrier Reef Adventures

Website	Company & Contact	Description	Depart	Return
Half Day Snorkelling - Eureka Cruises	Eureka Cruises 0408 870 965 info@reefsprinter.com.au	<ul style="list-style-type: none"> ▪ Half Day - 4 hour Low Isles travelling on <i>Eureka</i> ▪ Snorkelling ▪ BYO soft drinks and Alcoholic Drinks ▪ Private Charter only - up to 10 people 	8:30am	12:30pm
Full Day Snorkelling - Eureka Cruises	Eureka Cruises 0408 870 965 info@reefsprinter.com.au	<ul style="list-style-type: none"> ▪ Full day Inner and Outer Great Barrier Reef ▪ Snorkelling ▪ BYO soft drinks and Alcoholic Drinks ▪ Private Charter only - up to 10 people 	8:30am	4:30pm
1 Day Sail Itinerary - Liquid Desire	Liquid Desire 0438 877 783 anthony@liquiddesire.com	<ul style="list-style-type: none"> ▪ Full day Low Isles or Tongue/Batt Reef ▪ Snorkelling & Diving ▪ Fishing, Windsurfing, Kiting ▪ Private charter ▪ Maximum 11 guests 	8am	5pm
Oceansafari	Ocean Safari 4098 0006 tours@oceansafari.com.au	<ul style="list-style-type: none"> ▪ Half day reef snorkelling tours ▪ Departs Cape Trib – 25 minute ride to Mackay Reef ▪ Max. 25 guests 	7:30am 11:30am	12:30pm 4:30pm
Scuba Dive & Snorkel - Poseidon Cruises	Poseidon Cruises - <i>Quicksliver Group</i> info@poseidon-cruises.com.au 4087 2100	<ul style="list-style-type: none"> ▪ Full day Outer Barrier Reef travelling on <i>Poseidon</i> ▪ Diving and Snorkelling ▪ Visits 3 Agincourt Reef sites ▪ Marine biologist interpretation and citizen science ▪ Max 65 guests 	8:30am	4:15pm



GBR Great Barrier Reef Adventures

Website	Company & Contact	Description	Depart	Return
Quicksilver Cruises	Quicksilver reservations@quicksilver-cruises.com 4087 2100	<ul style="list-style-type: none"> ▪ Full day Outer Barrier Reef travelling on either <i>Quicksilver V</i> or <i>Quicksilver VIII</i> ▪ Snorkelling and Diving; Marine Biology Talks; guided snorkels ▪ Semi Submersible ▪ Ocean Walker - helmet diving - keep your glasses on & hair dry! ▪ Scenic Helicopter Flights; Underwater Observatory ▪ Average 150 guests 	10am	4:30pm
Quicksilver Dive	Quicksilver Dive - <i>Quicksilver Group</i> 19 Warner St Port Douglas, reservations@quicksilverdive.com.au 4087 2111	<ul style="list-style-type: none"> ▪ State-of the art PADI Dive Training Centre in Port Douglas ▪ PADI Learn to scuba dive courses ▪ Open water training dives on the Great Barrier Reef with Silversonic or Poseidon. ▪ Refresher and Discover Scuba Pool Dives at the Training Centre 	8:30am	4:30pm
Lagoon & Low Isles Snorkeling - Reef Sprinter	Reef Sprinter 0408 870 965 info@reefsprinter.com.au	<ul style="list-style-type: none"> ▪ 2 ¼ hours Low Isles (Option A) ▪ Snorkelling ▪ Max. 14 guests 	9am 11:30am 2pm	11:15am 1:45pm 4:15pm
Low Island Snorkeling Tour - Reef Sprinter	Reef Sprinter 0408 870 965 info@reefsprinter.com.au	<ul style="list-style-type: none"> ▪ 3 ½ hour Low Island Lagoon Snorkelling Tour (Option B) ▪ Snorkelling ▪ Glass Bottom Boat ▪ Max. 14 guests 	8:30am 1pm	12pm 4:30pm
Outer Reef Snorkel Tours Reef Sprinter	Reef Sprinter 0408 870 965 info@reefsprinter.com.au	<ul style="list-style-type: none"> ▪ 3 ½ hour Outer Great Barrier Reef on <i>Reef Sprinter 4</i> (Option C) ▪ Purpose-built rigid inflatable vessel ▪ Max. 14 guests 	8am	11am



GBR Great Barrier Reef Adventures

Website	Company & Contact	Description	Depart	Return
Snorkelling Calypso	Reef Unlimited <i>Experience Co</i> 4222 7465 info@calypsoreefcruises.com	<ul style="list-style-type: none"> ▪ Full day Outer Barrier Reef – travelling on <i>Calypso Blue</i> ▪ Snorkelling ▪ 70 guests 	8:45am	4:15pm
Dive & Snorkel - Calypso	Reef Unlimited <i>Experience Co</i> 4222 7465 info@calypsoreefcruises.com	<ul style="list-style-type: none"> ▪ Full day Outer Barrier Reef travelling on <i>Calypso Ten</i> ▪ Snorkel & Dive ▪ 85 guests 	8:45am	4:30pm
Low Isles Snorkelling Half day - Calypso	Reef Unlimited <i>Experience Co</i> 4222 7465 info@calypsoreefcruises.com	<ul style="list-style-type: none"> ▪ Half Day Low Isles – weekdays only ▪ Snorkelling ▪ Glass Bottom Boat ▪ Guided Island Walk 	7:30am 1:15pm	11:30pm 5:15pm
Low Isles Snorkelling - Shaolin	Shaolin Port Douglas 0407 406 386 sales@shaolinportdouglas.com.au	<ul style="list-style-type: none"> ▪ Full Day - 7 ½ hours – Low Isles ▪ Snorkelling ▪ Private charter ▪ Max. 22 guests 	8am	3:30pm
Silversonic Dive & Snorkel	Silversonic – <i>Quicksilver Group</i> 4087 2100 reservations@quicksilver-cruises.com	<ul style="list-style-type: none"> ▪ Full day reef trips travelling on <i>Silversonic</i> ▪ Snorkelling and Dive ▪ Three different sites on Agincourt Reef ▪ Max. 90 guests 	8:30am	4:30pm
Wavedancer Low Isles - Great Barrier Reef Sailing Tour	Wavedancer – <i>Quicksilver Group</i> 4087 2100 reservations@quicksilver-cruises.com	<ul style="list-style-type: none"> ▪ Full day trip to Low Isles; journey time 45 min ▪ Coral viewer & shuttle operates throughout the day ▪ Snorkelling; guided snorkel tours from the beach ▪ Guided beach and heritage trail walk by a Marine Biologist 	10:00am	4:30pm



GBR Great Barrier Reef Adventures

Website	Company & Contact	Description	Depart	Return
Full Day Reef Snorkel Tour with Wavelength Reef Cruises	Wavelength 4099 5031 info@wavelength.com.au	<ul style="list-style-type: none"> ▪ Full Day Outer Reef Snorkel Tour ▪ Three sites; marine biology talks & guided snorkels ▪ Max. 48 passengers 	8:10am	4:00pm
Low Isles Epic Reef & Island Tour Windswell Adventures	Windswell 0427 498 042 windswellkitesurfing@gmail.com	<ul style="list-style-type: none"> ▪ Full day reef trip – Low Isles, Snapper or Undine Cay ▪ Stand up paddle board ▪ Snorkelling ▪ Max. 20 guests between two vessels 	8:30am	3:30pm
Snapper Island Epic Reef & Island Tour	Windswell 0427 498 042 windswellkitesurfing@gmail.com	<ul style="list-style-type: none"> ▪ Full day trip to Snapper Island ▪ Stand up paddle board ▪ Snorkelling ▪ Max. 11 guests between two vessels 	8:30am	3:30pm
Undine & Mackay Cays - Windswell	Windswell 0427 498 042 windswellkitesurfing@gmail.com	<ul style="list-style-type: none"> ▪ Full day trip to Undine Cay ▪ Stand up paddle board ▪ Snorkelling ▪ Max. 20 guests between two vessels 	8:30am	3:30pm
Mackay Cay & Outer Reef	Windswell 0427 498 042 windswellkitesurfing@gmail.com	<ul style="list-style-type: none"> ▪ Full day trip to Mackay Cay ▪ Stand up paddle board ▪ Snorkelling; choose either wakeboarding or tubing ▪ Kiteboarding gear from those who are experienced ▪ Max. 20 guests between two vessels 	8:30am	3:30pm
Great Barrier Reef Tours	Windswell 0427 498 042 windswellkitesurfing@gmail.com	<ul style="list-style-type: none"> ▪ Full day trip Low Isles or Snapper Island or Undine Coral Cay. ▪ Stand up paddle board & Snorkelling ▪ Choose either wakeboarding or tubing ▪ Kiteboarding gear from those who are experienced ▪ Max. 15 people 	8:30am	3:30pm



GBR Great Barrier Reef Adventures

Website	Company & Contact	Description	Depart	Return
Forever Reef Project Tour	info@gbrlegacy.org	<ul style="list-style-type: none"> The world's first publicly accessible living coral biobank with over one third of the Great Barrier Reef's coral species. 40 minute tour Max. 16 guests Min Age 5 	Shop 44 Crystalbrook Marina Monday through Friday 9:00 AM to 5:00	



Helicopter Flights

Link to Tour	Contact	Description	
30-Minute Scenic Flight	Nautilus Aviation 4034 9000 info@nautilusaviation.com.au	30 minute scenic flight over the Great Barrier Reef.	Daily
Vlasoff Sand Cay	Nautilus Aviation 4034 9000 info@nautilusaviation.com.au	<ul style="list-style-type: none"> 25-minute helicopter flight over Great Barrier Reef. 2 hours with gourmet picnic lunch & sparkling wine Snorkelling 	Available between 1 September and 31 March
World Heritage Highlights	Nautilus Aviation 4034 9000 info@nautilusaviation.com.au	<ul style="list-style-type: none"> 45 minute helicopter flight to Daintree River Daintree River Cruise 4WD tour with Billy Tea Safaris Cape Tribulation 	7:45am pick up 8:15am Flight Departure 5:30pm Return
Port Douglas Luxe Tours	0404 651 534 Info@portdouglasluxetours.com	A thoughtfully curated half-day journey through the reef and rainforest, beginning with an exclusive reef education experience at Forever Reef, followed by a helicopter flight over the Great Barrier Reef and a visit at Mossman Gorge. Max. 4 guests.	\$3100 for 2 guests \$650 per additional guest



Horse Riding

Company	Contact	Description	Times
Cape Tribulation Horse Rides	1800 111 124 gday@capetribhorserides.com.au 3812 Cape Tribulation Road, Cape Tribulation	<ul style="list-style-type: none"> Scenic ride of discovery. Enjoy a leisurely rainforest ramble through to Myall Beach and back again. 1 ½ - 2 hour drive from Port Douglas through awesome rainforest. 	Two Tours Daily 10:00am & 1:30pm Book Here



Hot Air Ballooning

Company	Contact	Description	Times
Hot Air Balloon	4015 2622	<ul style="list-style-type: none"> Self Drive to Balloon launch site or transfers from Port Douglas Total experience 4 hours – balloon flight is 50 - 60 minutes Breakfast after the flight 	Daily Early – 4am!



Indigenous Experiences *Yalada*

Name	Contact	Description	Time
Mossman Gorge Adventure Day	4099 3677 sales@backcountrybliss.com.au	<ul style="list-style-type: none"> Full day rainforest experience blending adventure and culture. Start with the signature River Drift Experience on the Mossman River, combining a guided river walk with a float downstream. After lunch, join a Kuku Yalanji smoking ceremony at Mossman Gorge and enjoy an easy interpretive walk through Daintree National Park. 	8:30am – 4:30pm Pickup & Drop off all Port Douglas/Mossman Book Here
Daintree Dreaming	Downunder Tours 4047 9066 res@downundertours.com	<ul style="list-style-type: none"> Small group luxury coach tour Kubirri Warra leads an authentic coastal adventure across the beach, mudflats, and mangroves of their ancestral fishing grounds. Walk trails at Mossman Gorge Lunch at Mayi Café at Mossman Gorge Cultural Centre Janbal Gallery immersive art experience 	9am to 4pm Monday Wednesday Friday Saturday



Indigenous Experiences *Yalada*

Name	Contact	Description	Time
Flames of the Forest	Flames of the Forest 0488 500 550 Mon – Fri 9am to 5pm experience@flamesoftheforest.com.au	<ul style="list-style-type: none"> ▪ Journey into Dreamtime legend and discover the magic of local indigenous culture in a rainforest setting. ▪ Two Kuku Yalanji brothers share their remarkable culture during a delightful tropical feast featuring locally sourced produce. ▪ Performance features a cultural background story, traditional Dreamtime storytelling, didgeridoo playing, and song. ▪ Pick up and drop off from Port Douglas accommodation. 	7:30pm Thursday Nights April to November
Janbal Art Gallery	info@janbalgallery.com.au 0456 619 220 – (SMS only) 5 Johnston Road, Mossman Binna has a severe hearing impairment Please communicate via email or SMS.	Janbal Art Gallery is a true Aboriginal experience owned and run by acclaimed Kuku Yalanji Aboriginal artist Brian 'Binna' Swindley. 2-hour art workshop – learn about local Kuku Yalanji ways of life, history and stories as well as the use of symbols, language, colours and line work used in traditional Aboriginal art. All whilst creating your very own artwork to take home with you.	Mon - Fri 9am to 5pm Weekends by appointment. Book Workshop Here
Kuku Yalanji Cultural Habitat 2 hour tour	Kuku Yalanji Cultural Habitat Tours 4098 3437 kuku@conxx.com	<ul style="list-style-type: none"> ▪ 2 hour experience - Traditional education and medicines Tour ▪ Learn how to handle and throw a traditional spear ▪ Learn about bush foods & medicines, the coastal ecosystem, and use of traditional artefacts and hunting tools. 	Tours are tidal based: 9:30am or 1:30pm
Kuku Yalanji Cultural Habitat 3 hour tour	Kuku Yalanji Cultural Habitat Tours 4098 3437 kuku@conxx.com	<ul style="list-style-type: none"> ▪ 3 hour experience – Traditional Hunting Tour ▪ Learn how to handle and throw a traditional spear ▪ Learn about bush foods & medicines, the coastal ecosystem, and use of traditional artefacts and hunting tools. ▪ Option to include traditional smoking ceremony ▪ Bookings essential 	Tour times vary with the tide and will be confirmed upon booking.



Indigenous Experiences *Yalada*

Name	Contact	Description	Time
Ngadiku Dreamtime Walks	Mossman Gorge Cultural Centre 4099 7000 walk@mossmangorge.com.au	<ul style="list-style-type: none"> ▪ 1 ½ hour experience ▪ Traditional Smoking ceremony ▪ Stroll through lush rainforest, observing traditional huts or humpies along the way. ▪ Indigenous guide demonstrates traditional plant use, bush foods and talks about special relationship with the rainforest. ▪ Topped of with tea and damper. 	Daily 10am; 11am; 1pm & 2pm
Southern Daintree	Walkabout Cultural Adventures 0429 478 206 juan@walkaboutadventures.com.au	<ul style="list-style-type: none"> ▪ Full Day / Morning or Afternoon tour ▪ <i>Ngana Julaymba Dungay</i> – We all going Daintree ▪ Southern side of the Daintree River and Mossman area. ▪ Guided walk rainforest Mossman Gorge and local coastal habitats, beaches and mangrove forests. ▪ Gain an insight into the Kuku Yalanji people; how they use the natural environment, learn about different foods & medicines, sample seasonal bush tucker, try Aboriginal hunting practices. ▪ Boomerang / spear throwing and if you are lucky, catch a mud crab. 	Full Day 8am to 4:30pm Morning: 8am to 1pm Afternoon 12:30pm to 4:30pm
Northern Daintree	Walkabout Cultural Adventures 0429 478 206 juan@walkaboutadventures.com.au	<ul style="list-style-type: none"> ▪ Full Day Tour ▪ <i>Ngana Kulkinga Dungay</i> – We all going Cape Tribulation ▪ Travel north of the Daintree River to explore the Daintree rainforest and the different environments around Cape Tribulation, where the rainforest meets the reef. ▪ Guided walk through the rainforest ▪ Learn the history culture and traditions of the Kuku Yalanji people. 	8am to 4:30pm



Lawn Bowls

Name	Contact	Description	Times
Club Mossman	4098 1434 info@clubmossman.com.au 4-8 Johnston Road, Mossman	<ul style="list-style-type: none"> Lawn bowls; bowls available for hire Arrive 15-30 mins before start time. Online bookings are taken prior to 11.00am on the day of bowls. 20 minute drive from Macrossan Street 	<p>Mon & Tue - Green avail from 11am Wed - Mixed Social Bowls 1pm Thu - Ladies Social Bowls 1pm Mixed Social Bowls 1st & 3rd Thu 5:30pm Fri – green available from 11am Sat - Men’s Jackpot Social Bowls starts 1.00pm Sun - Mixed Social Bowls starts 1.00pm</p>



Mountain Bike Tours

Name	Contact	Description	Time
Bike n Hike’s CREB Track Tour	0477 774 443 bikenhike@live.com.au Bike n hike	<ul style="list-style-type: none"> Epic three days tours for extreme mountain bikers on the famous CREB Track, Roaring Meg Falls (Kija), welcome to country and cold beer at the Lion’s Den Hotel. All catering, camping gear & transfers from Port Douglas supplied Private and corporate charters available – please call. 	
Hidden Lagoons Mountain Bike Tour	Bike n Hike 3 Warner St, Port Douglas 0477 774 443 bikenhike@live.com.au	<ul style="list-style-type: none"> Perfect for kids from 7 yrs and any first-timers to mountain biking. From your accommodation we take a short drive up to Mt Molloy on the edge of the Great Dividing Range. An easy trail awaits you through natural forest where wild brumbies are often spotted. Swim in the lagoon makes for a welcome halfway stop while enjoying some snacks. 	



Paragliding

Website	Contact	Description	
High Adventure Paragliding	High Adventure Paragliding – QLD 1300 610 145 fly@highadventure.com.au	20 minute tandem paragliding flight from Rex Lookout, Wangetti Beach Tandem flights are available between June and September. 2 minutes from Hartley’s Crocodile Adventures 30 minutes from Port Douglas	Flights are available daily, typically between 12pm and 5pm.
Hartley Crocs & Paragliding Full Day	High Adventure Paragliding – QLD 1300 610 145 fly@highadventure.com.au	Full Day Adventure: Hartley Crocs & Tandem Paragliding Full Day Adventure Morning and early afternoon exploring Hartley's Crocodile Adventures Exhilarating tandem paragliding flight in the afternoon.	

Pickle Ball

Name	Contact	Description	Times
Pickleball Games		<ul style="list-style-type: none"> Mossman Shire Hall, Mill Street Indoor Sports Centre, 46 -62 Front St, Mossman Daintree Village Community Hall 	Mondays 10am Sundays 10am Tuesdays 3pm
Pickleball Courts for Hire	4099 5537 49-69 Port Douglas Road, info@miragecountryclub.com.au	<ul style="list-style-type: none"> Port Douglas – Mirage Country Club Three Courts & Bats available for hire (balls complimentary) 	7 days 7:00am to 6:00pm



Private Boat Charters

Vessel	Contact	Description	
Monsoon	Monsoon Reef Charters 0498 772 727 info@monsoonreefcharters.com.au	<ul style="list-style-type: none"> Guided Snorkelling with all equipment supplied Lycra stinger-suits & flotation devices Light tackle & sport fishing gear & tuition Dive instructor & dive gear Morning tea, gourmet lunch and afternoon tea Non-alcoholic beverages (Guest may BYO alcohol) Interpretive reef talks 10 guests 	<ul style="list-style-type: none"> Full day Great Barrier Reef
MV Island Selina	Dragon Lady Fishing Charters	<ul style="list-style-type: none"> Reef fishing and snorkelling, all equipment provided Light lunch and refreshments provided 	<ul style="list-style-type: none"> Full Day Great Barrier Reef
Indigo	Indigo 0429 901 250 info@indigoportdouglas.com.au	<ul style="list-style-type: none"> 13 metre Fountaine Pajot Orana 44 catamaran. Spacious foredeck, cockpit seating for 12 and air conditioned saloon seating for 8. Owners are your crew. Age 10+ 	<ul style="list-style-type: none"> Wedding charters Overnight Charters Sunset Sailing Half and Full Day Snorkelling 3 hour lunch tour



Rainforest Canopy Tours

Company	Contact	Description	Times
Daintree Discovery Centre	Cow Bay 4098 9171 info@discoverthedaintree.com	Aerial Boardwalk – 11 metres off the ground and rated as one of the Top Ten Skywalks in the country By Australian Geographic. The 23 metre canopy tower allows unprecedented access to the rainforest. Five different viewing platforms give visitors of all ages access the various levels of the rainforest – from the forest floor to the uppermost reaches of the canopy.	Daily 9am – 5pm *last entry at 4pm 1 hour drive from Port Douglas
Treetops Adventure	Cape Tribulation 4003 9031 capetrib@treetopsadventure.com.au	Zip line through rainforest canopy for a bird’s eye view of the Daintree Rainforest – up to 15 metres above ground –1 ½ to 2 hour Canopy Tour. 3922 Cpae Tribulation Road, Cape Tribulation.	School & Public Holidays: 7 days 9am - 3pm Tues-Sun 10am - 3pm Check website for availability.



River Cruises

Company	Location	Contact	Description	Times
Bruce Belcher & Sons Daintree River Cruises	2856 Mossman-Daintree Rd, Lower Daintree	0459 241 899 info@daintreerivercruises.com.au	Cruises operate throughout the day	Daily 9.30am to 4.00pm
Cape Tribulation Wilderness Cruises	Cape Tribulation Road, Thornton's Beach, Cooper Creek	0457 731 000	<ul style="list-style-type: none"> ▪ Cruise on Cooper Creek ▪ Night cruises by arrangement 	3 trips Daily 10:30am; 11:30 and 2pm
Crocodile Express	Daintree Village & Daintree Ferry	4098 6120 info@daintreeconnection.com.au	One hour wildlife cruises operate throughout the day at each end of the Daintree River.	Daily at Ferry crossing 10am – 3.30pm Daily in Village 8:30am – 3:30pm
Daintree Boatman Wildlife Cruises	Daintree Village	0417 651 929 boatman@daintreerivertours.com.au	Dawn & Dusk – Birdwatching & Wildlife 2 hour tours Max. 10 guests	Apr-Aug 7am & 4pm Sep-Jan 6:30am & 4:30pm Closed Feb/Mar
Daintree Crocodile Tours	Daintree Village Public Jetty	0487 566 694	One hour river cruise leaving Daintree Village jetty. Max. 24 guests per cruise	Daily 8am to 5pm bookings essential
Daintree River Cruise Centre	Daintree River 3914 Mossman Daintree Road, Daintree	4098 6115 info@daintreerivercruisecentre.com.au	Advanced Eco Wildlife Cruises on the Daintree River. Departing from a private waterfront location with beautiful picnic areas and gardens.	Daily 9.30am – 4pm
Daintree River Wild Watch	Daintree Village Public Jetty	0447 546 926 info@daintreeriverwildwatch.com.au	Sunrise & sunset 2 hours 10 passengers only	Departure times: Sunrise 6:30am Sunset 4pm
Solar Whisper	Daintree River at the ferry crossing	0475 332 265 info@solarwhisper.com	One hour wildlife cruises. Two hour wildlife and photographic tours on request.	Tours run throughout the day 9.30am – 3.30pm



River Drift Experiences

Company	Contact	Description	Times / Booking
Back Country Bliss Adventures	Back Country Bliss Adventures 4099 3677 sales@backcountrybliss.com.au	<p>Our signature River Drift Experience is swimming, floating and a rainforest walk all combined into one. It includes:</p> <ul style="list-style-type: none"> ▪ Experienced river trained guides ▪ Hotel transfers ex Port Douglas ▪ Self drive pick up locations ▪ Up to 2 hours in the rainforest ▪ River sled to float on ▪ Wetsuit or thermal top, aqua boots ▪ Free tour photos, Snacks & water <p>Group Size - Min 2 – Max 12</p>	<p>Two tours daily AM & PM</p> <p>Bookings Essential</p> <ul style="list-style-type: none"> ▪ Guests need a reasonable level of fitness & high level of mobility. ▪ Suitable Ages 4+ when river is calm & relaxing ▪ Only strong swimmers when the river is fast and adventurous. <p>If you have concerns please contact us before booking. Book Here</p>
Mossman Gorge Adventure Day	Back Country Bliss Adventures 4099 3677 sales@backcountrybliss.com.au	<p>Full day rainforest experience blending adventure and culture. Start with the signature River Drift Experience on the Mossman River, combining a guided river walk with a float downstream. After lunch, join a Kuku Yalanji smoking ceremony at Mossman Gorge and enjoy an easy interpretive walk through Daintree National Park.</p>	<p>8:30am – 4:30pm Pickup & Drop off all Port Douglas/Mossman</p> <p>Book Here</p>





Sailing & Inlet Cruises

Company	Contact	Description	Depart	Return
Eureka Sunset Cruises	Eureka 0408 870 965 info@reefsprinter.com.au	<ul style="list-style-type: none"> 1 ½ hour sunset cruise BYO Alcohol & Soft Drinks Complimentary nibbles 	5pm	6:45pm
Sunset Sailing - Indigo Port Douglas	Indigo 0429 901 250 info@indigoportdouglas.com.au	<ul style="list-style-type: none"> 2 hour sailing cruise Cheese & dip platter featuring local produce BYO own alcohol Max. 12 guests 	Nov – Feb Mar, April, Sept & Oct May – August	4:30pm 4:15pm 4:00pm
River Cruise Lady Douglas River Cruise	Lady Douglas 0408 986 127 info@ladydouglas.com.au	<ul style="list-style-type: none"> 1 ½ hour cruise Complimentary beverage from our onboard bar More drinks may be purchased onboard Delicious box of snacks 	10:30am 12:30pm 2:30pm 4:30pm	12pm 2pm 4pm 6pm
Port Douglas Yacht Club	WAGS Wednesday Afternoon Go Sailing	Every Wednesday afternoon club members volunteer their time and their yachts to take the public out sunset sailing. Please arrive at 3:30pm, to register. Skippers arrive between 4 and 5pm and choose their own “crew”. They will be personally asking you to join them on their private yacht for a sail. You need to stay in the club in order to be personally selected by the skipper.		
Sunset Sail • Sailaway Port Douglas	Sailaway 4099 4200 info@sailawayportdouglas.com	<ul style="list-style-type: none"> 1 ½ hour Sunset Cruise <i>Sailaway IV Lagoon 500 or Sailaway VI 560</i> Canapes Welcome drink 	5pm	6:30pm
Sunset Cruise - Shaolin Port Douglas	Shaolin Junk Ship 0407 406 386 sales@shaolinportdouglas.com.au	<ul style="list-style-type: none"> 1 ½ hour Sunset Cruise Yum Cha canapes; One complimentary beverage More drinks may be purchased onboard 	5pm	6:30pm
Lunch Cruises - Shaolin Port Douglas	Shaolin Junk Ship 0407 406 386 sales@shaolinportdouglas.com.au	<ul style="list-style-type: none"> 1 ½ hour Seafood Cruise Barramundi & Crocodile Spring Rolls and prawns Complimentary drink 	11am 1:30pm	12:30pm 3pm



Swimming, Water Parks

Name	Location	Description	Times
Cassowary Falls	Cassowary Falls 0481 988 307 info@cassowaryfalls.com.au 263 Upper Daintree Road, Upper Daintree – a 4km and/or a 6 minute drive from Daintree Village	<ul style="list-style-type: none"> Private property. Waterfall accessible on tour. 2 ½ hour Cassowary Waterfall and Daintree Rainforest tour. Action packed offroad adventure. Splash through creeks on All Terrain Vehicles. Swimming at Cassowary Falls. Army Truck ride. Seasonal bush tucker and farm fruit tasting. Self-drive to the property (no 4WD needed) 	10am – 12.30pm 1pm – 3.30pm
Mossman Public Swimming Pool	Corner Foxtan Avenue & Park Street, Mossman 0417 768 266 mossmanpcp@douglas.qld.gov.au	<ul style="list-style-type: none"> The only 50m olympic pool with a large retractable shade cover, Toddler and wading pool, Splash park 	Mon to Fri: 6.00am – 7.00pm Sat & Sun: 8.00am to 5.00pm Note: Pool is closed between 12 and 12:30pm on Saturdays and Sundays)
Port Douglas Surf Life Saving Club	Swim between the flags. Net & Flags are at the northern end of Four Mile Beach	<ul style="list-style-type: none"> Lifeguards patrol Four Mile Beach daily. Flags are put out at the beginning of these patrols. Stinger nets are in place Nov to May. Lifeguards install and check the nets daily 	May - September 9am to 5pm October to May 8am – 5pm
Port Douglas Splash Park	Zero depth splash park	<ul style="list-style-type: none"> Splash Park opens daily at 9am. Light display 6pm to 9pm Free BBQs 9am to 9pm 	9am to 6pm 6pm to 9pm
Big4 Glengarry - Water Day Pass	Big 4 Glengarry Holiday Park 4098 5922 admin@glengarrypark.com.au 70 Mowbray River Road, Mowbray	<ul style="list-style-type: none"> Adventure waterpark with six water slides, including one into the pool, playground, pedal carts and jumping pillow. No booking required 	Open Daily 10am and 5pm Closed Christmas Day, Boxing Day, and New Year's Day



Trike Tours

Name / Link	Contact	Description	Booking Information
Tropical Trike Tours	0407 392 876 info@triketours.com.au	<ul style="list-style-type: none"> ▪ 1 ½ hour tour - Port Douglas & Mowbray Tour ▪ 2 ½ hour tour - Mossman Gorge & Shannonvale Tour ▪ 2 ½ hour tour - Julatten Hotel & Shannonvale Tour (Unavailable Mon & Tues) ▪ 2 ½ hour tour - The Coast Road & Ellis Beach Tour ▪ 5-6 hours – Ultimate Full Day Adventure Tour - Destination decided by you. 	Bookings are per trike: 1 seater V8 2 seater trike 3 seater trike



Watersports

Website	Link to Tour	Contact	Description
WindSwell Kitesurf and Standup Paddle Board	Windswell 0427 498 042 windswellkitesurfing@gmail.com	<ul style="list-style-type: none"> ▪ Flite Board ▪ Kitesurfing ▪ Kiteboarding ▪ Standup Paddle Board ▪ Tube Rides, Wakeboarding & Windsurfing ▪ Wingsurfing – cross between Windsurfing and Kitesurfing. 	Runs daily Meet crew at 8am Min. age 10
Back Country Bliss	Back Country Bliss 4099 3677 sales@backcountrybliss.com.au	<ul style="list-style-type: none"> ▪ River Drift Experience ▪ Guided walk through Mossman’s trails ▪ Float down clear streams in river sled. ▪ Light snack after tour ▪ Age 4+ 	Tour times: 9am 2pm Book Here



Walking and Hiking Tours

Name	Description	Age	Grade	Time	Location & Time	
Sunset Photography Walking Tour	0497 055 151 info@traceyjonesphotography.com	Educational photography walking tour. Tips on how to take beautiful photos of key landmarks as the sun goes down. Capture stunning photos of Rex Smeal Park, St Mary's By The Sea, The Sugar Wharf and Marina. Suitable for beginners or photography enthusiasts, either smartphone or professional camera. Max. 6 guests.	Ages 12+	Easy	3 hours	Meet at Rex Smeal Park Mar-Apr 4:15pm May-Aug 4pm Sep-Oct 4:15pm Nov-Feb 4:30pm
Cooper Creek Wilderness	0438 889 136 info@coopercreek.com.au 2333 Cape Tribulation Road Diwan	Situated in the central, most biologically diverse portion of remnant rainforest, this privately-owned World Heritage property showcases high quality pristine forest through guided, interpreted tours. Trails are natural - no boardwalks or artificial structures The 2-hour Grand Fan Palm Gallery Tour is 2kms in length and is an excellent introduction to the unique Licuala Fan Palm Forest. The 4-hour Greater Wilderness Tour, 7kms in length, is the ultimate Daintree Tour, traversing more rainforest types and interpreting to a greater depth to do justice to the world's longest surviving rainforest.				Two Hour Grand Fan Palm Gallery Tour ~ 1.5Km 10am or 2pm. Four-hour Greater Wilderness Experience ~ 7 Km) 8:30am
Hartley's Falls Hiking Tour	0477 774 443 bikenhike@live.com.au	9 kilometre Hiking Tour – Hartley's Creek Falls Return transfers Port Douglas accommodation Max. 10 guests	Ages 5+	Intermediate	5 hours	
Rainforest Walking Tour and Waterfall Swim	Daintree Experience 0467 552 660 daintreeexperience@gmail.com	Step off the beaten path and into the heart of the world's oldest living rainforest. Leave the crowds behind and embark on a journey through emerald canopies, hidden valleys, and untouched wilderness to a secret, secluded waterfall accessible only to a select few. Traverse fascinating trails suited for all abilities while spotting rare tropical wildlife. Reward your trek with a refreshing swim in a crystal-clear, private waterfall rock pool surrounded by jungle and enjoy a gourmet lunch. See the forest through the eyes of a genuine local guide who shares the stories and science of this prehistoric ecosystem. Choose from half-day, or full-day tours or contact us to custom-build your own tour. Pick ups from Port Douglas and Mossman.				Full Day 8:30am – 4:30pm Book Here Half Day 10am - 4:30pm Book Here



Walks – Self Guided

Self Guided	Description	Length	Grade	Time	Trail Head
Flagstaff Hill Trail	<ul style="list-style-type: none"> Coastal track connecting Four Mile Beach and Rex Smeal Park. Trinity Bay Lookout, located at Flagstaff Hill in Port Douglas, offers breathtaking panoramic views of Four Mile Beach and the Coral Sea. 	1.5 km 3 km return			Northern end Four Mile Beach & Rex Smeal Park.
Lower River Track, Mossman Gorge	<ul style="list-style-type: none"> Glimpse crystal-clear waters rushing through tumbled granite boulders as you meander on this walking track along the river bank. 	640m return	Easy	30 mins	Begins from Shuttle bus stop in Mossman Gorge Day Use area
Baral Marrjanga Track	<ul style="list-style-type: none"> The track is suitable for wheelchairs, strollers and the vision-impaired. 	660m return	Easy	30 mins	Begins from Shuttle bus stop in Mossman Gorge Day Use area
Rex Creek Bridge Track, Mossman Gorge	<ul style="list-style-type: none"> Meander through lush rainforest to a gently swaying suspension bridge spanning the cascading waters of Rex Creek. 	1.4km return	Easy	1 hour	Follow Baral Marrjanga trail & turn onto Rex Creek track.
Rainforst Circuit Track, Mossman Gorge	<ul style="list-style-type: none"> Explore tall, dense lowland rainforest as you enjoy the views on this moderately easy circuit walk. 	3.4km circuit	Moderately Easy	2 hours	From the shuttle bus stop take the Baral Marrjanga track and then Rex Creek bridge track . Track begins on the far side of the bridge.
Hartleys Creek Falls	<ul style="list-style-type: none"> Scenic cascading waterfall located at the end of a gentle walking track. Accessible by a broad and easy walking track 	7.5 km return	Easy	2-3 hours	4069 Captain Cook Highway, Wangetti. 30 mins drive from Port Douglas
Spring Creek Falls	<ul style="list-style-type: none"> Hike through to 75m waterfall called Black Rock Falls Unformed track – first half is relatively flat trot next to creek bed. Second half requires more legwork & occasional bum-sliding to get over slightly bigger rocks before reaching a few mini-falls and croc-free swimming holes. An element of courage is needed for last leg to the final cascade as you'll be climbing over steeper rocks and boulders. 	6.3 km return	Moderate	2 ½ to 3 ½ hours return	Spring Creek Rd, Mowbray Valley. 18 minutes drive from Macrossan Street.
Devil's Thumb Manjil Dimbi	Challenging trail enables hikers to explore unique vegetation of the upland and lowland rainforests.	10.6 km return	Difficult	7-9 hours	<ul style="list-style-type: none"> Whyanbeel Valley, 17 km north of Mossman

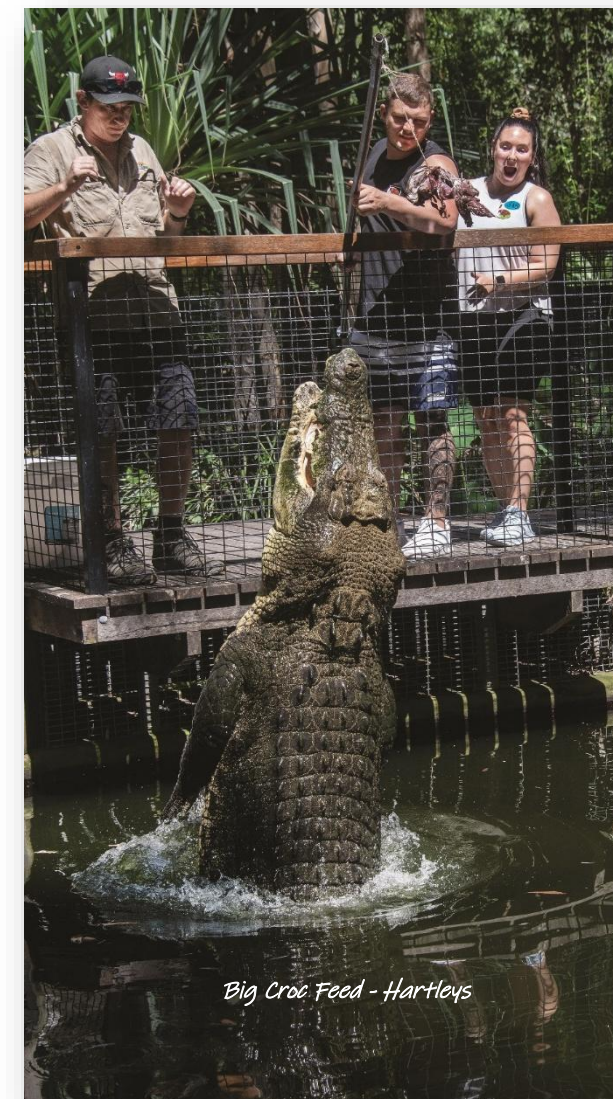
Wildlife Experiences

Hartleys Crocodile Adventures

4019 Captain Cook Highway, Wangetti

4055 3576 sales@crocodileadventures.com

Activities	Description	Opening Hours
General Admission	<ul style="list-style-type: none"> No booking required – walk ins welcome Crocodile Farm Tour Cassowary Feeding; Snake show & Crocodile Feeding One lagoon cruise (20 minutes) 	8:30am to 5:30pm Daily excl. 14 June 2026 & Xmas Day
Premium Wildlife Experiences		
Breakfast with Koalas	<ul style="list-style-type: none"> Advance bookings by 4pm previous day Hot breakfast overlooking lagoon Wildlife Keepers with Koala on dining deck between 9:00 & 9:30 am 	8:30 – 9:30am
Original Hartley’s Freshie Feed	<ul style="list-style-type: none"> May be booked on arrival Pole feed a freshwater crocodile 	11am
Big Croc Feed	<ul style="list-style-type: none"> Advance booking required Pole feed a huge saltwater crocodile. Meet and hold a juvenile croc for a souvenir photo. 	1pm
Mammal Magic	<ul style="list-style-type: none"> One-hour interactive guided tour with Mammal Keeper; max. 6 guests Feed, pet and hold mammals and Australian marsupials Wallaby feeding and pat, with a talk; Meet a Wombat Min. age 6 years – must be accompanied by paying adult 	Twice daily 11am 1:15pm
Zootastic	<ul style="list-style-type: none"> One hour guided tour; max. 5 guests; 5 iconic animals. Feed fruit to a cassowary, hold a python or lizard. Pat a wombat, and feed friendly birds and wallabies. Min. age 10 years – must be accompanied by paying adult 	Twice daily 9am 1:30pm
Reptastics	<ul style="list-style-type: none"> One hour guided tour for a max. 5 guests. Hold a python or baby crocodile for a souvenir photo. Get up close with giant pythons and american alligators Meet some of our colourful lizards, snakes and tortoises. Min. age 10 years – must be accompanied by paying adult 	10:45am



Big Croc Feed - Hartleys



Wildlife Experiences

Wildlife Habitat

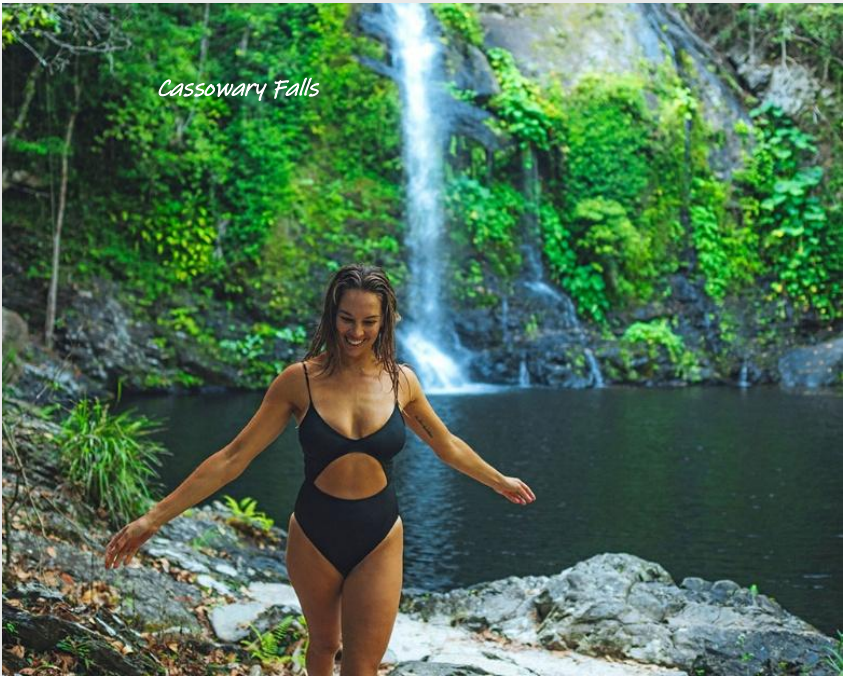
145 Port Douglas Road, Port Douglas
4099 3235 info@wildlifehabitat.com.au

Activities	Description	Opening Hours
General Admission	<ul style="list-style-type: none"> No booking required – walk ins welcome Standard admission pass is valid for five consecutive days Includes all wildlife talks and wildlife presentations. Feeding talks with Wildlife Keepers offer opportunities to feed an array of wildlife. Get close up to a Cassowary on our Rainforest & Cassowary Feeding Tour Estuarine Crocodile with our Crocodile Feeding presentation. Daily animal presentations allow guests to see and touch animals up close. 	8am to 4pm Closed Christmas Day 25 December
Preimum Wildlife Experiences		
WildNIGHT Nocturnal Tour	<ul style="list-style-type: none"> 2 hour guided tour of the park after hours led by wildlife keeper Hand-feed kangaroos Meet gliders, pythons, lizards, bettongs, frogmouths, and a spotted tail quoll. Twilight supper 	5:45pm to 7:45pm
Breakfast with the Birds	<ul style="list-style-type: none"> Breakfast includes eggs of the day, tropical antipasto, grilled specialties, baked goods, teas and coffee Guests get up close and personal with koalas and birds and also chat with our keepers 	8am to 9am Arrive at 7:45am
Croc Feeding	<ul style="list-style-type: none"> 30 minute activity where you feed a big saltwater crocodile. Tap into the Croc Keeper's knowledge to learn about this extraordinary animal Min. Age 16 years 	2:30pm Arrive by 2pm
Swim with the Salties	<ul style="list-style-type: none"> Swim just centimetres away from huge crocodiles. Age 12+ Big Al, Ton and Goliath have an average size of just over 4.5 metres and weigh in at around 350-400 kilograms each 	10am; 10:45am 12:45pm & 1:30pm
Private Wildlife Tour	<ul style="list-style-type: none"> 2-hour personalised tour - Bookings are essential. 24 hours notice required Enter the koala enclosure for one-on-one time Visit the Tropical Animal Rehabilitation Centre to witness our wildlife rescue efforts, and engage with animals hand-raised by our keepers. This is only available through this tour. Tour concludes with dining experience. 	8:30am, 11:00am, and 1:00pm



4WD Off Road Adventures

Link to Tour	Contact	Description	Times / Booking
Cassowary Falls	0481 988 307 info@cassowaryfalls.com.au 263 Upper Daintree Road, Upper Daintree	<ul style="list-style-type: none">▪ 2 ½ hour tour.▪ Action packed offroad adventure.▪ Splash through creeks on All Terrain Vehicles.▪ Swimming at Cassowary Waterfall.▪ Army Truck ride.▪ Seasonal bush tucker and farm fruit tasting.▪ Tour starts at the farm gate.▪ Self-drive standard vehicle - 50 minutes from Port Douglas	Two tours daily 10am – 12.30pm 1pm – 3.30pm Book Here



↑ Cruise Ship Visits 2026

Date	Ship	Arrival	Departure	Line	Passenger Capacity
Feb 18	Celebrity Edge	08:00	18:00	Celebrity Cruises	3,373
Mar 7	Crown Princess	08:00	18:00	Princess Cruises	3,080
Mar 12	Carnival Luminosa	07:00	17:00	Carnival	2,260
Mar 13	Crown Princess	08:00	18:00	Princess Cruises	3,674
Apr 1	Discovery Princess	07:00	18:00	Princess Cruises	4,402
Apr 4	Celebrity Solstice	10:00	20:00	Celebrity Cruises	3,420
Apr 13	Crown Princess	07:00	17:00	Princess Cruises	3,674
May 3	Carnival Splendor	07:00	17:30	Carnival	3,619
May 25	Carnival Splendor	07:00	17:30	Carnival	3,619
Oct 30	Crown Princess	07:00	17:00	Princess Cruises	3,674
Nov 15	Celebrity Edge	08:00	18:00	Celebrity Cruises	3,373
Nov 27	Celebrity Solstice	07:00	17:00	Celebrity Cruises	3,420
Nov 30	Royal Princess	08:00	18:00	Princess Cruises	4,272
Dec 8	Celebrity Edge	08:00	18:00	Celebrity Cruises	3,373



Source: Port Douglas, Australia cruise port schedule | CruiseDig